



Curriculum Concepts

Power and Legitimacy

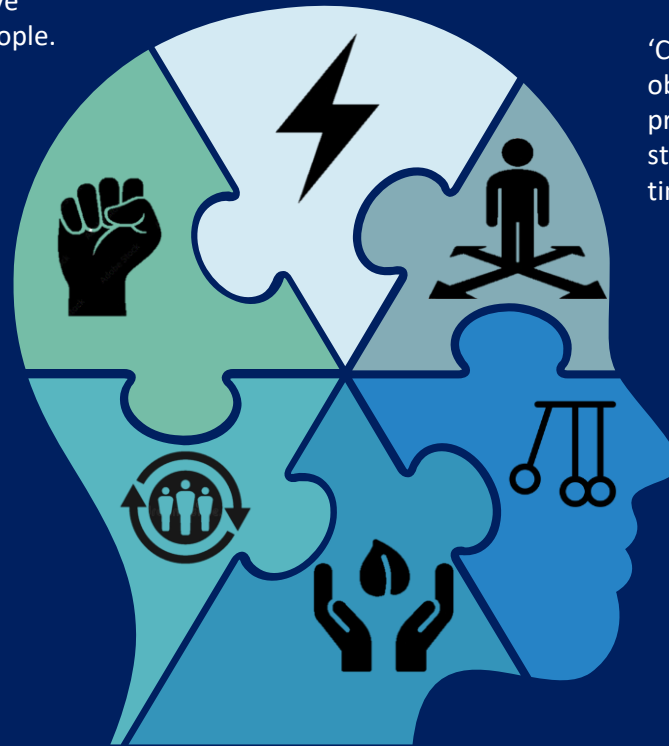
Legitimacy is the right or power to give orders, make decisions, or control people. This often involves Government or Monarch (Kings and Queens).

Energy and Sustainability

Sustainability is the idea that humans must interact with the environment in a way that ensures there will be enough resources left for future generations. Human activity has harmed the environment in many ways. Some of the resources that people use cannot be replaced once they are used.

Ecology and Evolution

Evolution is the development of changes that can be passed genetically over the history of an organism. Ecology is the study of the interactions between an organism and its environment.



Change and Continuity

'Change' refers to something that is obviously different from what occurred previously. 'Continuity' refers to things that stay the same, relatively unchanged, over time.

Movement and People

Human migration is people moving from one place to another to stay there. It often happens in large numbers. Migration can be within countries or between countries. Humans are known to have migrated extensively throughout history and prehistory. Sometimes, the movement is voluntary, but sometimes, people are forced to move. They may suffer warfare, religious and political persecution, famine and other natural disasters. When people are forced to move, they are refugees.

Cause and Effect

Cause and effect is a relationship between events and processes, where one causes the other to take place.